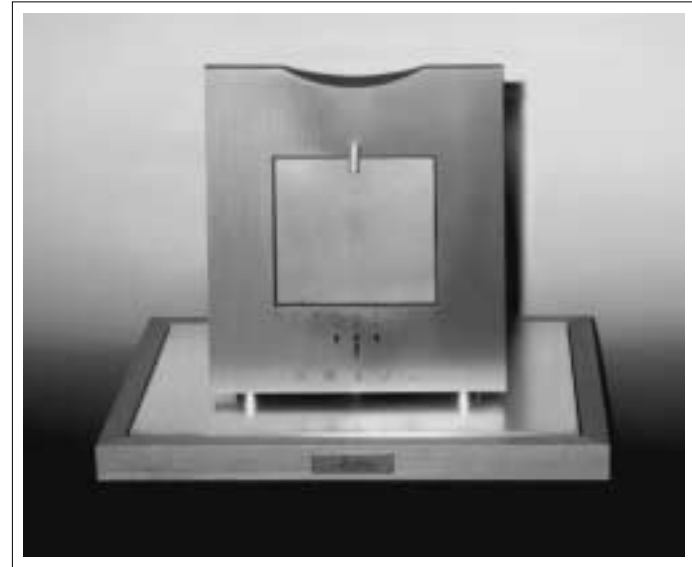


Dimensions

470 x 370 x 35 mm  
(W x D x H) Standard

Other dimensions (W x D)  
are available



Picture "Fondato Silenzio" with Acapella "Queen"

Acapella bases „Fondato Silenzio“

*Construction, function and user informations*

All components in electronic devices being powered are producing electromagnetic waves. Depending on the construction and material of the devices, these waves can cause, more or less, strong mechanical resonances.

These resonances can harm the perfect function of components, such as transistors, valves, resistors, boards, HF coils, power supplies etc.

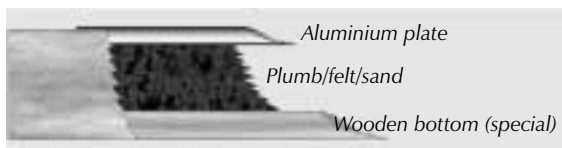
When using HiFi equipment we have detected the following effects: limited dynamics; non-transparent audio reproduction at lower levels. Inaccurate pulse reproduction at higher levels; limited stereophonic reproduction of the sound stage.

No definite acoustic center between the loudspeakers due to improper channel separation.

Depending on the devices and their coupling conditions, the Acapella bases „Fondato Silenzio“ neutralize the above described effects and they will increase the performance of your equipment dramatically. The result is a more accurate, cleaner and - especially at low levels - more transparent music reproduction. When the entire equipment of a HiFi system has been optimized with the Acapella bases, you will have a sound experience that is only comparable with a three-dimensional original event and it will bring a more or less holographic music reproduction to you.

## Construction

„Fondato Silenzio“ comes with four pucks. These pucks are used as a non-positive connection between the device and the base. To achieve this connection with the greatest possible care the aluminum plate of the base is grinded by hand. Other surfaces such as anodized aluminium surfaces are unsuitable for a non-positive connection. The marginal roughness of these surfaces prevents derivation of the resonances or reduces it considerably. To achieve the best possible derivation of these waves the pucks are manufactured with a defined height and diameter ratio. They do not store energy. Unlike spikes whose surface transformation results in the fact that



Sectional drawing

only given frequencies can be derived, the pucks transmit completely the whole band of frequencies. The efficiency of the base is impressive even without pucks, but the use of the

pucks increases absorption until the limits of the electronical design of the devices.

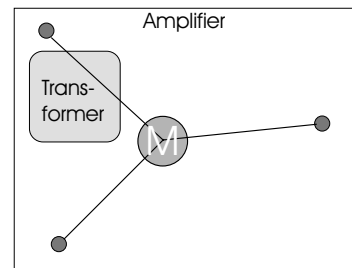
## Installation

As described above, the Acapella base comes with 4 pucks, but in the normal case only 3 pucks should be used. We recommend the use of the fourth puck only in case of an inadequate stability of the device on the base. Please consider during installation that the center of gravity of the mass of the particular device is located in the puck's center. This installation excludes also the possibility to put several devices on one base. (Exception: special version for several devices).

The following picture shows the position of the pucks for an amplifier whose center of gravity of the mass is not located in the center of the case. Optimum performance can be achieved by experimenting with various



The bases come with:  
4 hand-grinded pucks with a defined proportion of height and diameter



The center of gravity of the mass should be located in the center of the puck

positions of the pucks. If possible, positions having a perfect bearing surface as well as connections between boards and the case (screws) should be preferred.

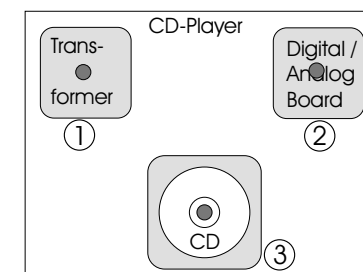
If the internal design of the devices is known, the positions of the various modules can also be taken into consideration. The most critical points regarding interferences in a CD player are the CD transport, the power supply and the D/A converter. As shown in the drawing, the position of the pucks causes a reduction of the trans-

former's hum (1), derivation of HF resonances (2) and the reduction of mechanical resonances (3). With this proven installation you will obtain best results.

## Optimization

When a single base in a Hi Fi system is used, we recommend to start optimization at the end of the chain (amplifier). Explanation: Thanks to the base' derivation of resonances, the pulse characteristics of the devices become exceptionally dynamic. Therefore, these dynamics can overload other devices in the system so that the base cannot show the effect to its best advantage.

Despite this statement some experiments will show you the position where you can achieve the best possible performance of the base.



Correct placement of the pucks

## Accessories - Speedblock and Bigblock

Further improvement can be achieved using the Speedblock (242 x 150 x 42 mm, 10,4 kg) and the Bigblock (150 x 85 mm, 8,6 kg), which are also available. „Fondato Silenzio“ can be shipped as a double-base for installation between two single components as well.



Speedblock



Bigblock (View from the bottom - hand-grinded aluminium surface)